


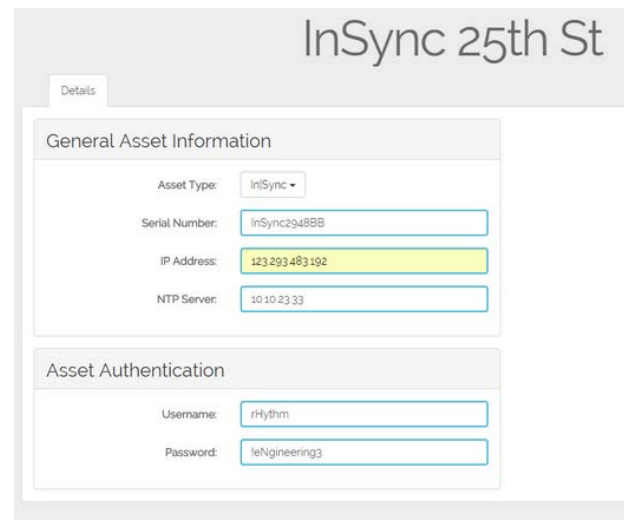
CONFIGURING IN|TIME WITHIN IN|TRAFFIC

Add the In|Time Cameras into In|Traffic

NOTE: In order to add the In|Time camera to the list of available In|Time cameras, you must have In|Time Device Management access within In|Traffic.

To add the camera into the database:

1. Open the Device Management tool from the In|Traffic main page. The Device Management page displays.
2. Click the  icon to add a new device. The Select a Name dialog box displays.
3. Type a name for the In|Time camera and click **Proceed**. The Details page displays.



4. Select In|Time from the type of device you are adding from the **Device Type** drop-down list box.
5. Type the serial number of the device in the **Serial Number** field.
6. Type the IP address of the device in the **IP Address** field.
7. Type or select the IP address of the device that serves as the NTP Server in the **NTP Server** field. The NTP server keeps time synchronized between all devices.
8. Type @ in the **Username** field. This is the username that is used to access the camera's configuration software.

9. Type either Genetec (if you did not change the default password on the camera) or the password you set for the camera in the **Password** field.
10. Click **Save** from the top navigation bar.

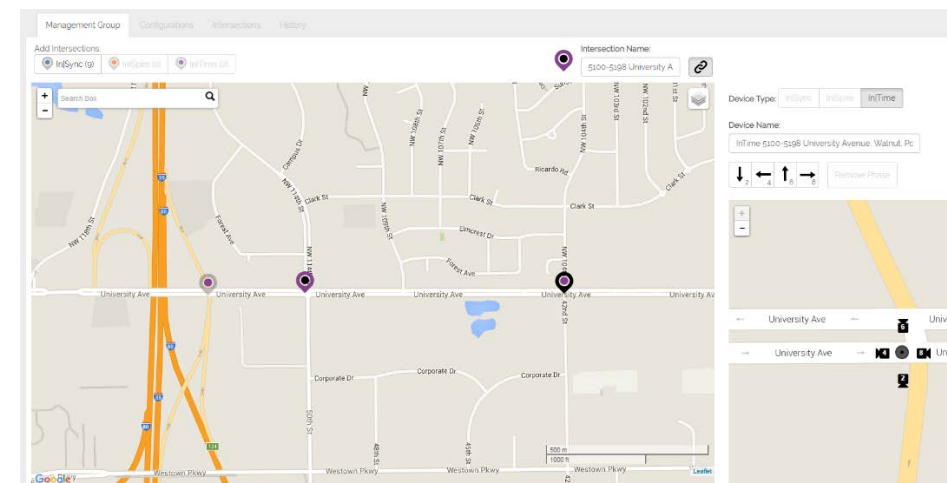
Define an In|Time Camera Location

NOTE: Before you can assign an In|Time camera to an intersection, the camera must be added into the Device Management application within In|Traffic.

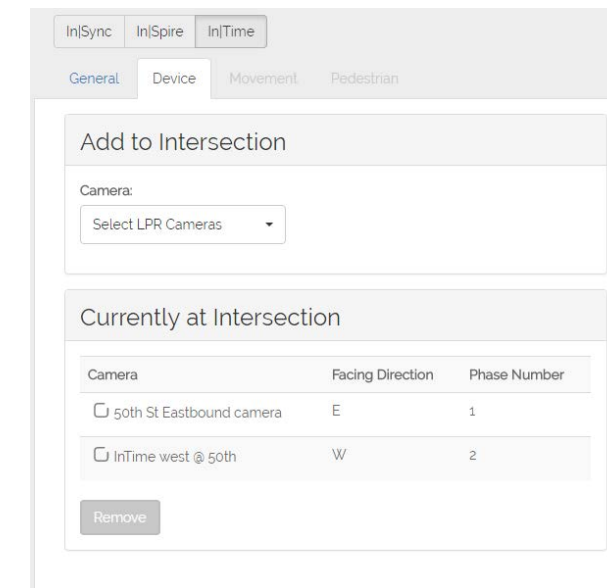
In order to receive travel time data, you must have an In|Time camera set up at both the starting and ending intersections.

To assign the In|Time camera to an intersection:

1. If the management group in which the intersections that contain cameras is not open, select the management group from the In|Traffic main page. The Management Group map view displays. If the intersections do not exist in a management group, create a new management group.
2. Select the **In|Time icon** above the map.
3. Click the intersection where the camera is located on the map.
4. Select the **In|Time icon** again to deselect it.
5. Click **Save** from the top navigation bar.
6. Select the intersection icon on the map to show intersection details. Four cameras are automatically assigned to the intersection.



7. If the intersection does not contain four cameras, select the arrow that represents the travel direction that is not being captured and click **Remove**.
8. Repeat step 7 until the intersection only displays the correct camera locations.
9. Click **Save** from the top navigation bar.
10. Click the intersection's icon on the map and then the marker icon to the left of the Intersection name field on the top of the map.
11. Click the **Device** tab. The Device page displays.
12. Verify that the In|Time cameras are set for the correct direction on this page. If not, remove the camera and replace it with the correct camera.
13. Click **Save** from the top navigation bar to save direction information.




Camera	Facing Direction	Phase Number
<input type="checkbox"/> 50th St Eastbound camera	E	1
<input type="checkbox"/> InTime west @ 50th	W	2

Create a Configuration Group with Coordination

After adding In|Time cameras to all the intersections, you must define how vehicles progress through the intersections through defining coordination within a configuration.

To add In|Time intersections to a configuration:

1. On the Management Group map, select the **Configurations** tab.
2. Click the  icon to create a new configuration. The Select a Name dialog box displays.
3. Type a name for the configuration and click **Proceed**. The Intersections page displays.

- Click the checkbox next to all the intersections that contain In|Time cameras.
- Click **Save**.

To define how traffic is flowing between the selected In|Time intersections:

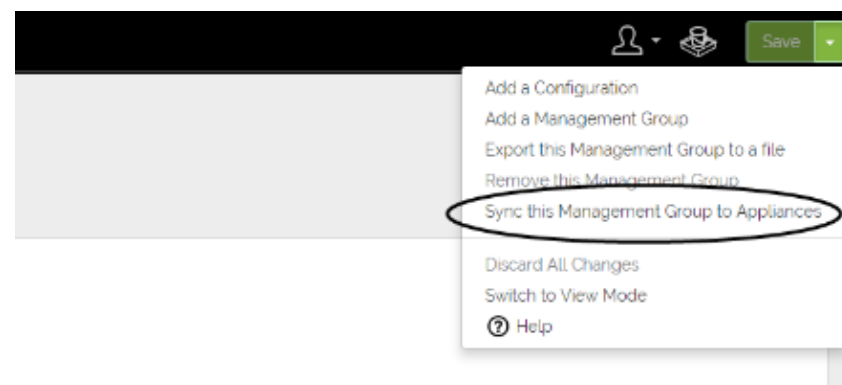
- Click the **Coordination** tab.
- Using the map, click the intersection from which traffic originates. The intersection displays at the top of the list on the left side. Select the phase arrow that represents the direction the vehicles are traveling.
- Click each intersection on the map in the same order as how vehicles would travel within the management group.
- After selecting the final intersection in the coordination, click **Add Segment**. This coordination group is added to the Current Coordination screen.
- If you have cameras set up to capture travel times of vehicles traveling in the opposite direction, repeat steps 2 through 4.
- To complete the setup of coordination, select **Save** from the navigation bar.

Sync In|Traffic Settings to the In|Time Camera

When you make configuration changes to a device, intersection, management group or configuration, the changes are not deployed to the devices in a management group automatically. You must manually deploy the changes to devices using the Sync Management Group to Devices option in the Save pull-down menu.

To start deploying configuration changes:

- Click **Sync this Management Group to Devices** from the Save pull-down menu. The Management Group Synchronization dialog box displays.
- Select the **In|Time** checkbox and click **Sync**.



A screenshot of the In|Traffic interface showing the Sync History table. The table has columns for Appliance Name, Appliance Type, Seq, Status, and Status Date/Time. All appliances listed are in a 'Synced' status.

Appliance Name	Appliance Type	Seq	Status	Status Date/Time
Appliance 1	In Sync	1	Synced	2015-11-17 10:06am
Appliance 10	In Sync	1	Synced	2015-11-17 10:06am
Appliance 11	In Sync	1	Synced	2015-11-17 10:06am
Appliance 12	In Sync	1	Synced	2015-11-17 10:06am
Appliance 13	In Sync	1	Synced	2015-11-17 10:06am
Appliance 14	In Sync	1	Synced	2015-11-17 10:06am
Appliance 15	In Sync	1	Synced	2015-11-17 10:06am
Appliance 16	In Sync	1	Synced	2015-11-17 10:06am
Appliance 17	In Sync	1	Synced	2015-11-17 10:06am
Appliance 18	In Sync	1	Synced	2015-11-17 10:06am
Appliance 19	In Sync	1	Synced	2015-11-17 10:06am
Appliance 2	In Sync	1	Synced	2015-11-17 10:06am

To view the status of which devices have synced:

- Click the **History** tab.
- Click the **Sync History** button.

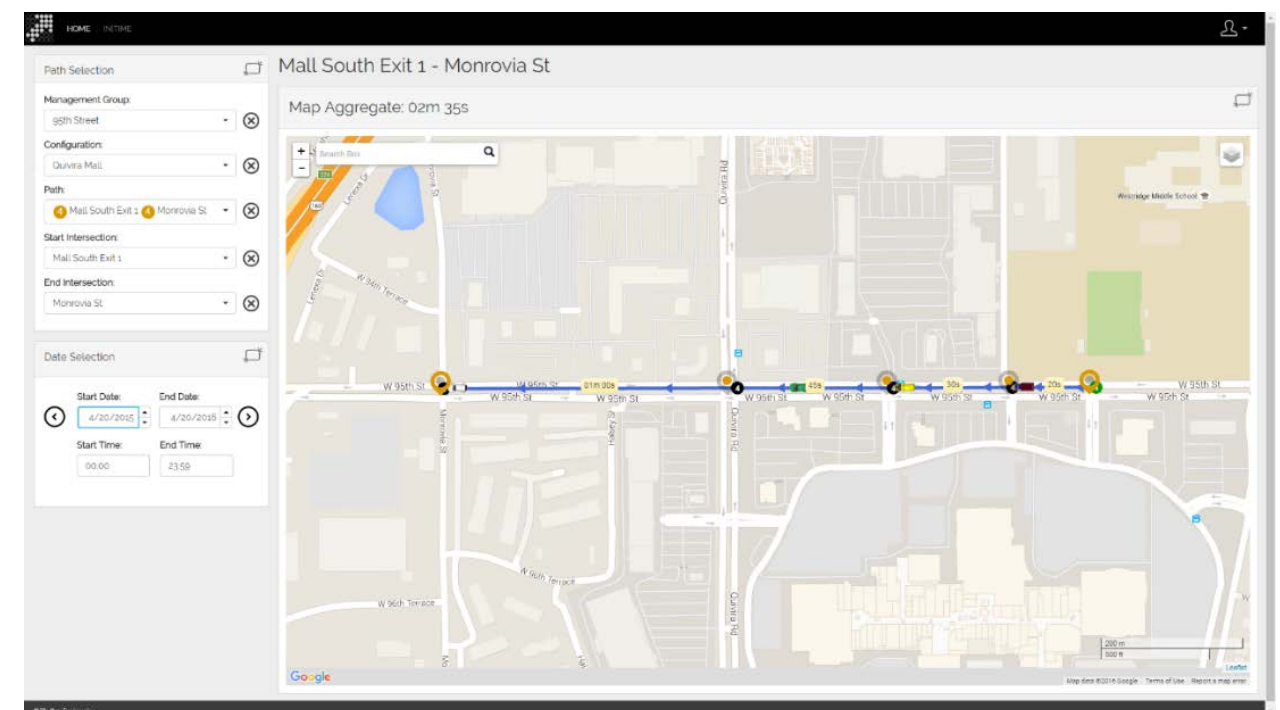
The synchronization status of each device displays next to each device in the Sync History list. As In|Traffic prepares to send the management group configuration to field devices, it verifies that no changes have been made onsite to the devices. If changes have been made that do not match the settings within In|Traffic, In|Traffic saves a snapshot of the device's settings and displays the History page, where the new snapshot (along with all changes) are displayed and ready for review.

Generate In|Time Travel Time Reports

Travel time is an important measure to gauge progress toward meeting your transportation system management goals. It is useful for comparing operational conditions before and after making intersection improvements and prioritizing future roadway improvement projects.

To generate a travel time report:

- From the In|Traffic home screen, select the **In|Time** module.
- Select the management group in which the intersection resides within from the Management Group drop-down list box.
- Select the configuration in which the intersection resides within from the **Configuration** drop-down list box.
- Select the path from the **Path** list box.
- Select the starting intersection for which you want travel time measured from the **Start Intersection** field.
- Select the ending intersection for which you want travel time measured from the **End Intersection** field.
- Define the start and end dates in which data displays from the **Start Date** and **End Date** fields.
- Define the time period in which you want data displayed the **Start Time** and **End Time** fields. The map to the right updates with travel times between each In|Time camera.



NOTE: To clear a field, click **X**.